

# Jil khom ute

## ESTER

Adar lha le Purim nikhuo sung si hi eiho am Israel te ding a hi Haman khut akuon leh lengpa Akhashverosh khut a kuon ki huhdoh nikhuo ahi.

Am Isarel te chu Modechai leh atunu Ester lamkai na nuoi in ana um uve, hichi lamkai na hi P-thien in Ester chu leng ding a ahung kilhen na ding a thil aguon jou a leng sung a panmun alah a anam mite ahuh doh thein a ding jih ahi. Chi akuoh hin Ester chung chang thu them khat hung jil be ute:

Israel ten Numei Gaonei 7 ena nei uvin ahi, amaho chu ahileh:

- |           |            |
|-----------|------------|
| 1. Sara   | 5. Avigail |
| 2. Miriam | 6. Khulda  |
| 3. Devora | 7. Ester   |
| 4. Hana   |            |

(Talmud Bavli Masekhet Megila 14-1)

### ESTER MIN (NAME)

Ester hi megilah sung a amin hi iijat ham in aki jih e:

#### 1. Ester Bung 2

(chang 5) Sushan khuopi sung a Yehudi khat ana um in ama pa min chu MORDECHAI akiti...  
(chang 7) Lai mun a chun HADASA kiti jong ama um e HADASA hi ESTER ahi

Talmud in amin tah le amin lhem ho hi hil chit na anei e:

#### 2. Talmud Bavli Masechet Megila 13-1

Rabi Meir in hitin ase i e: "Amin chu ESTER ahi, aleh ipi ding a HADASA kiti ham"?  
Ajih chu mi TZADIKIM ho hi HADASIM<sup>1</sup> tin ana ki min vou ji e.

Rabi Yehuda in hitin ase i e: "Amin chu HADASA ahi, aleh ipi ding a ESTER kiti ham"?  
Ajih chu aman thudih ana SEL MANG<sup>2</sup> jih ahi.

Rabi Nechemia in hitin ase i e: "Amin chu HADASA ahi, aleh ipi ding a ESTER kiti ham"?  
Ajih chu nam<sup>3</sup> dang ten ESTAHAR<sup>4</sup> tin ana kou uve.

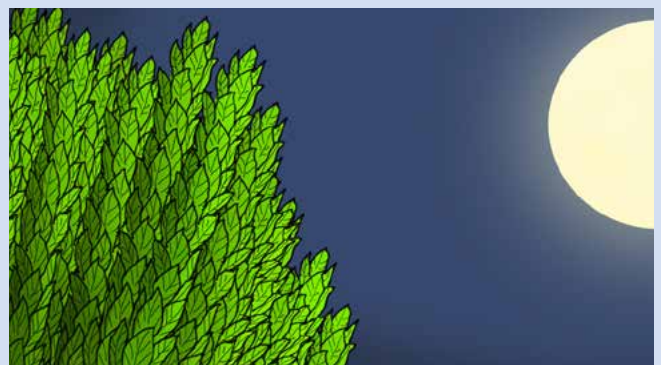
#### Khuolchin na:

1. **TZADIKIM** ho **HADASIM** tia ki kou na jih - **HADAS** thei khu anam tui leh ahoi bang in **TZADIKIM** ho thil bol jousi jong chu ahoi suh kei e.

2. **ATHUDIH HO SELGUH** - Ahung kuon na le anam mi hina asel, Chuleh Jewish ahina asel!

3. **Nam chuom te** - Jewish milou ho chu hichi min hi ana ki vou sah ahe! (**UMOT HA'OLAM**)

4. **ESTAHAR** - Ahoi dan chu Lhavah hoi bang in ana hoi e. (RASHI : Rabi Shlomo Itzhaki)



## ESTER THUSIM CHOMCHA:

**ESTER** hi Chaga Nu le Pa neilou ana hi, ama hi apu pa **MORDECHAI** in ana vet kol ahi – Megila a aki jih dan bang in “Ajih chu nu le pa neilou ahi..... anu le apa abei han chun apu pa **MPRDECHAI** in ana ki vah tai” (Ester bung 2 chang 7). Ester hi ahung liet chan gei in apu pa thusei jousi anun jing in leng in sung a leng dinmun achan gei in jong apu pa **MORDECHAI** thu anung jing nalai in ahi, chi verse akuon hin aki mu e: “**MORDECHAI** thusei jousi chung anung jing e...”

### QUESTION:

1. **KHAKHAMIM** ho dung jui a **ESTER** min hochu ale doh na ipi ham?
2. Ester min akiledoh na akuon **KHAKHAMIM** ho kikh a kiniel na chu ipi ham?
3. Ester chun ipi ana **SELGUH** ham?
4. **HADAS** ipi kisei na ham? Ipi ding a **TZADIKIM** ho tia hi ki min vou ham?



## ACHONDAN

VERSE ho a kuon leh MIDRASH akuon in Ester leng nu ana chon phat dan ho leh umchan phat dan ho velhau hitin hichi a kuon a hin jil doh ute. **TZNIUT le NUNNEM**.

Lengpa Akhasverosh insung a leng nu ding aki hol a chun, Ester hi ama thu umlou a ana ki kai lut ahi. Leng nu ding aki hol chun numei jousi ana thanuom chih un numei jousi chun Perfume, Make-up chuleh adang dang ana kiguot pi uvin ahi, hinlah Ester vang ima manchah ana ngai chapuoi:

### 3. Ester Bung 2 chang 8

(Chang 8) Khuosung a lengpan ah insung a leng nu ding ahol nan khuosung a thu alhut in, athulhut jou in Shusan ha Bira khuosung a numei jousi chu aki guo suh kei tauve, hi chi ni chun **ESTER** chu lengpa in a aki<sup>a</sup> kai lut e.

(Chang 15) **AHICHAYIL**, **MORDECHAI** paneo chanu **ESTER** ama nuop a chi hilou akai lut tho uchun **ESTER** chun **IMA ATHUM PUOI** midang to te ding in hijong le **ESTER** chu mijousi<sup>b</sup> mit mu in ahoi jing jeng e!

### 3a. Hilchit na

a. **THAHAT A KAILUT** - Ester chu ama nuop lungdei lang ahe tia ajuot ahipuoi, anuop lou a thahat a ki kai lut ahi.

b. **MIJOUSI MIT MUN AHOI SUH KEI E** - Mijousi chu ah upa/anaopa bol in abol suh kei



### 4. Talmud Bavli Masekhet Megila 13-2

**RACHEL** in Tzniut ana kiven tup jing a chi a kuon alo san chu chapa **SHAUL**<sup>1</sup> akimun ahi. **SHAUL**<sup>2</sup> in Tzniut ana kiven tup jing a chi a kuon alo san chu chanu **ESTER** akimun ahi.

### Khuolchin na:

1. **SHAUL** - Am Israel te ding a leng masa pen.
2. **SHAUL IN TZNIUT LAMPI ANA JUI JING** - Leng ana hi vang in ana Tzanua jing e.

### QUESTION:

1. **ESTER** hi mi **TZANUA** ahi tih hoi a kuon a ejil doh uhm?
2. Ipi ding a **RACHEL** le **SHAUL** akuon chilhah Tzadikim ho anei han ham?
3. **ESTER** hi mi **NUNNEM** ahi ti hi hoiya kuon a ejil doh uhm?

